

# Improving a Model of the Thermospheric Density Using CubeSat Ephemeris Data



Center for Orbital Debris Education and Research

November 13, 2018

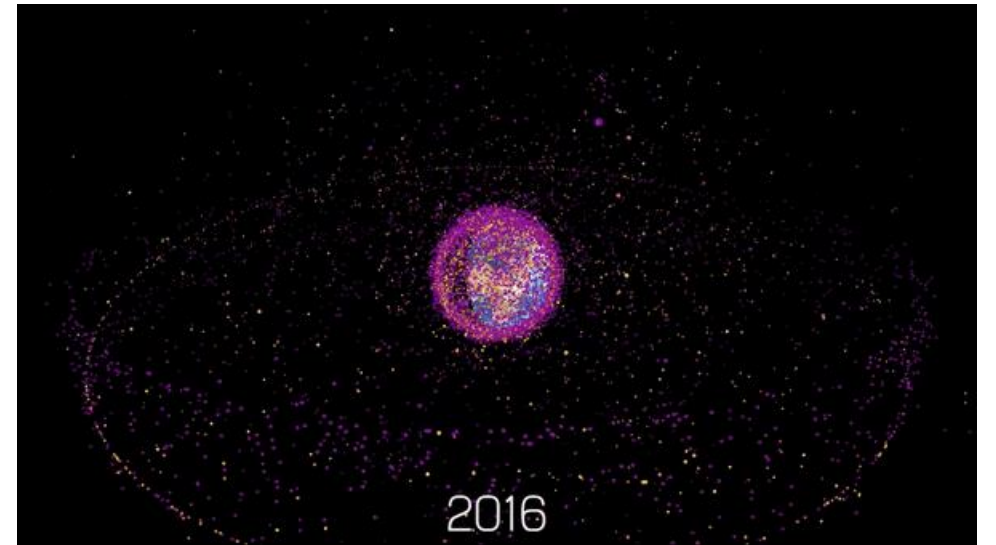
Daniel A. Brandt

Charles D. Bussy-Virat, PhD

Aaron J. Ridley, PhD

# Motivation

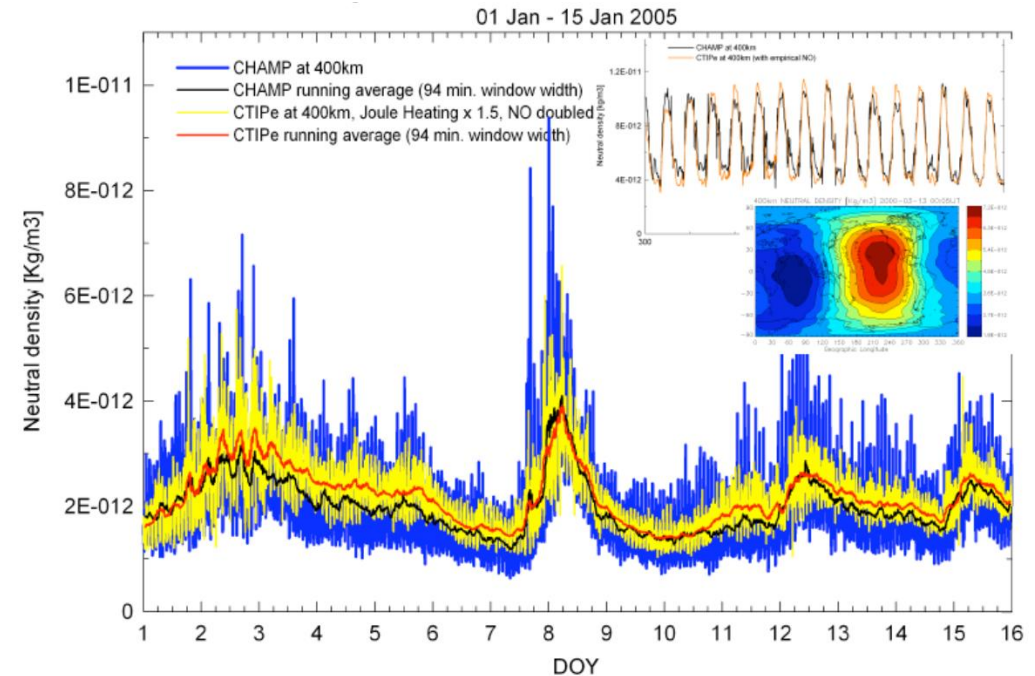
- Prominence of LEO satellites and space debris necessitates accurate thermospheric density modeling.
  - USSPACECROM tracks ~8,000 objects
  - NORAD tracks ~20,000 objects of softball size or larger
- Public relies on empirical density models (Jacchia, MSISE); we know ephemeris data can be used to calibrate density estimation.
- No near real-time calibration algorithm exists for our most accurate empirical model, NRLMSISE-00.



A simulation of ~17,000 trackable objects supplied by Space-Track, by Dr. Stuart Grey of the University College London (objects not to scale).

# Previous Work on Density Measurement and Calibration

- Thermospheric density variation and response to geomagnetic activity characterized by CHAMP, GRACE, and GOCE.
  - Density enhancements between 400%-800% of quiet time values during geomagnetic superstorms (Liu and Lühr 2005).
  - Seasonal variation of annual density amplitude can reach ~40-50% of the annual mean, decreasing northward from high latitudes in the southern hemisphere (Lei et al. 2012).
  - Accelerometer-derived densities suffer errors <15% sourced from solar radiation pressure, unknown lift and drag coefficients, instrument precision and biases, and unaccounted for thermospheric winds (Sutton et al. 2007).



Thermosphere density fluctuations at 400 km measured by CHAMP satellite and modeled by the Coupled Thermosphere Ionosphere Plasmasphere Electrodynamics Model (CTIPe) during a geomagnetic storm (Fedrizzi et al. 2015).



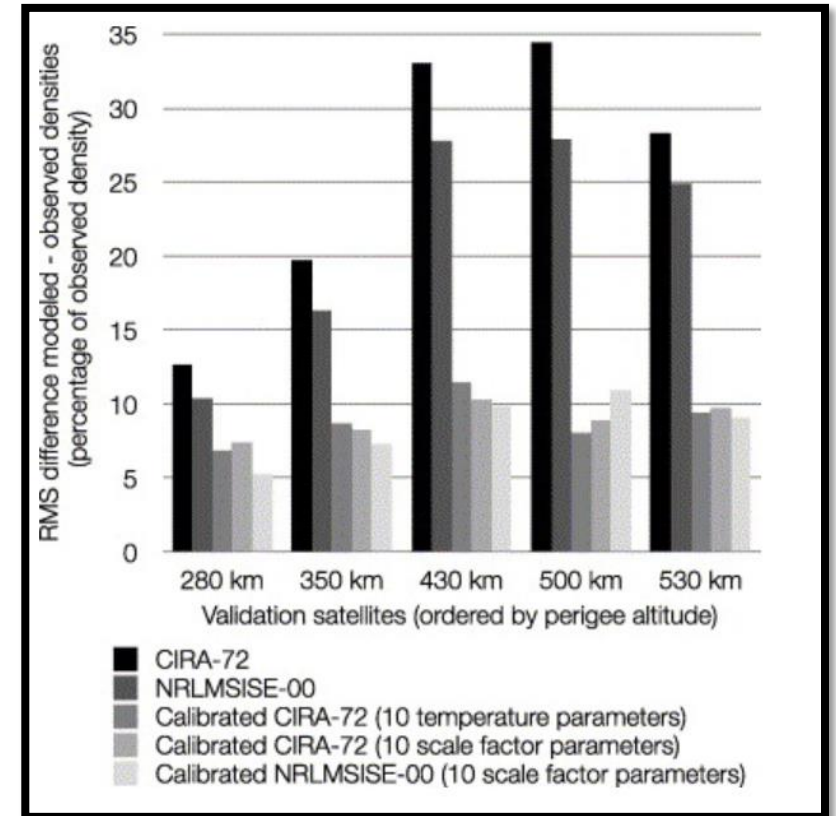
# Previous Work on Density Measurement and Calibration (cont.)

- HASDM (USAF Space Battlelab)
  - Validates GOCE densities to within 3% compared 10% for NRLMSISE-00, JB2008 and DTM2012 (Bruinsma et al. 2014)
  - Dynamic Calibration Atmosphere (DCA)
  - Near Real-Time calibration of density prediction
  - Uses direct Space Surveillance Network observations for calibration (75-80 objects)



# Previous Work on Density Measurement and Calibration (cont.)

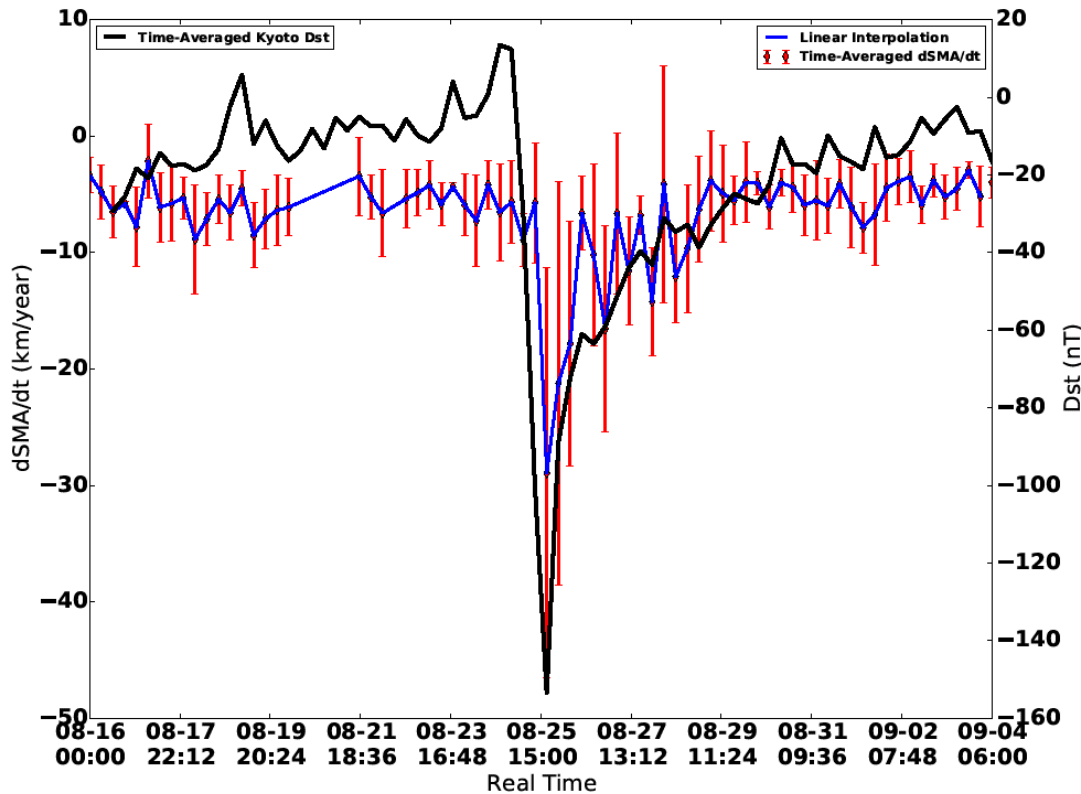
- Doornbos et al. 2008 demonstrated that density errors in empirical thermospheric density models can be reduced by using TLE data for calibration:
  - Modifying height-dependent scale factors to the density
  - Implementing temperature corrections to the CIRA-72 (Jacchia 1972) model, *based on DCA in HASDM*
- The most recent version of MSISE (NRLMSISE-00) outperforms CIRA-72 (see right).



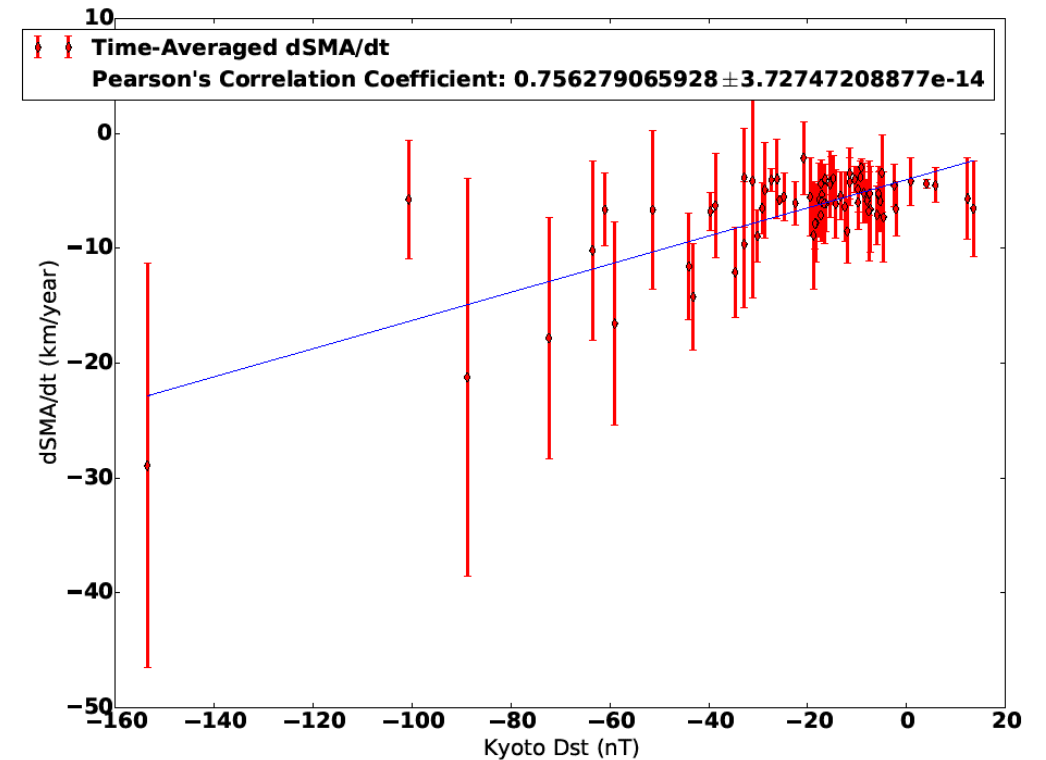
The resulting increase in density prediction accuracy due to calibration (Doornbos et al. 2008).

# Visualizing Geomagnetic Activity and Change in Satellite Altitude

6-hour Average of Dst and dSMA/dt: 2018-08-16 to 2018-09-05 (20 Satellites)

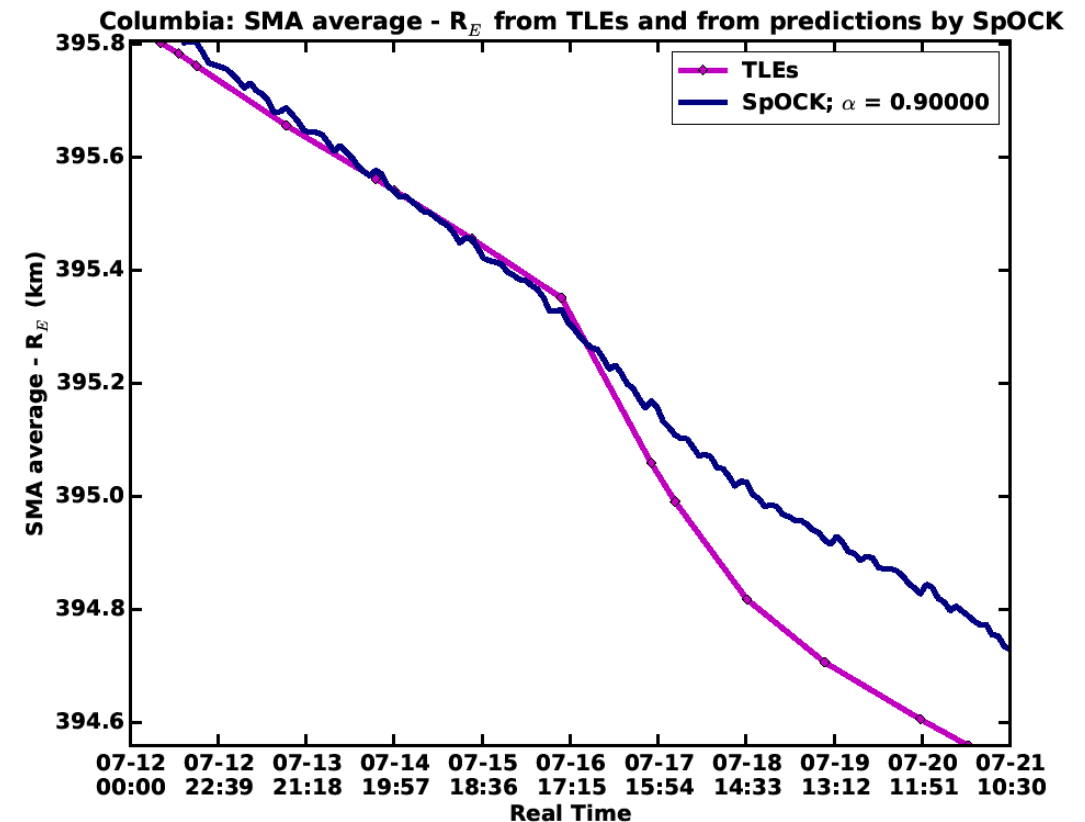
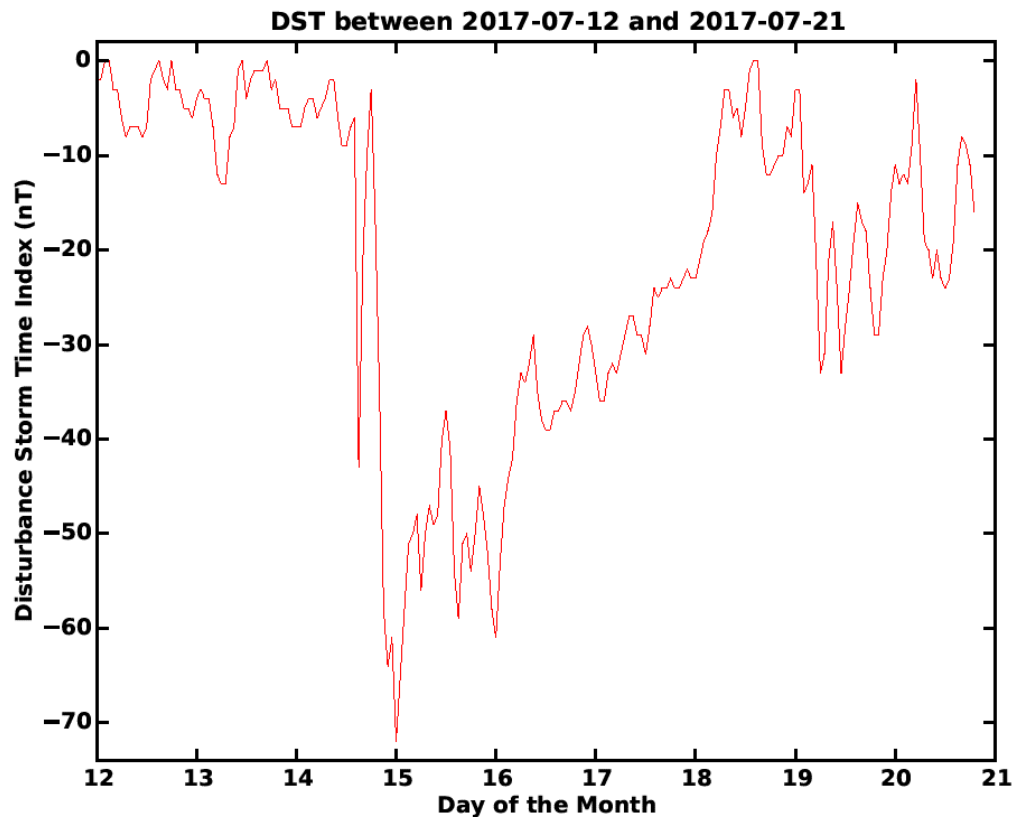


6-hour Average Correlation of Dst and dSMA/dt: 2018-08-16 to 2018-09-05 (20 Satellites)



The rate of orbital decay (here in change in semi-major axis per year) correlates quite strongly with disturbance storm time (Dst).

# SpOCK and the Limitations of NRLMSISE-00



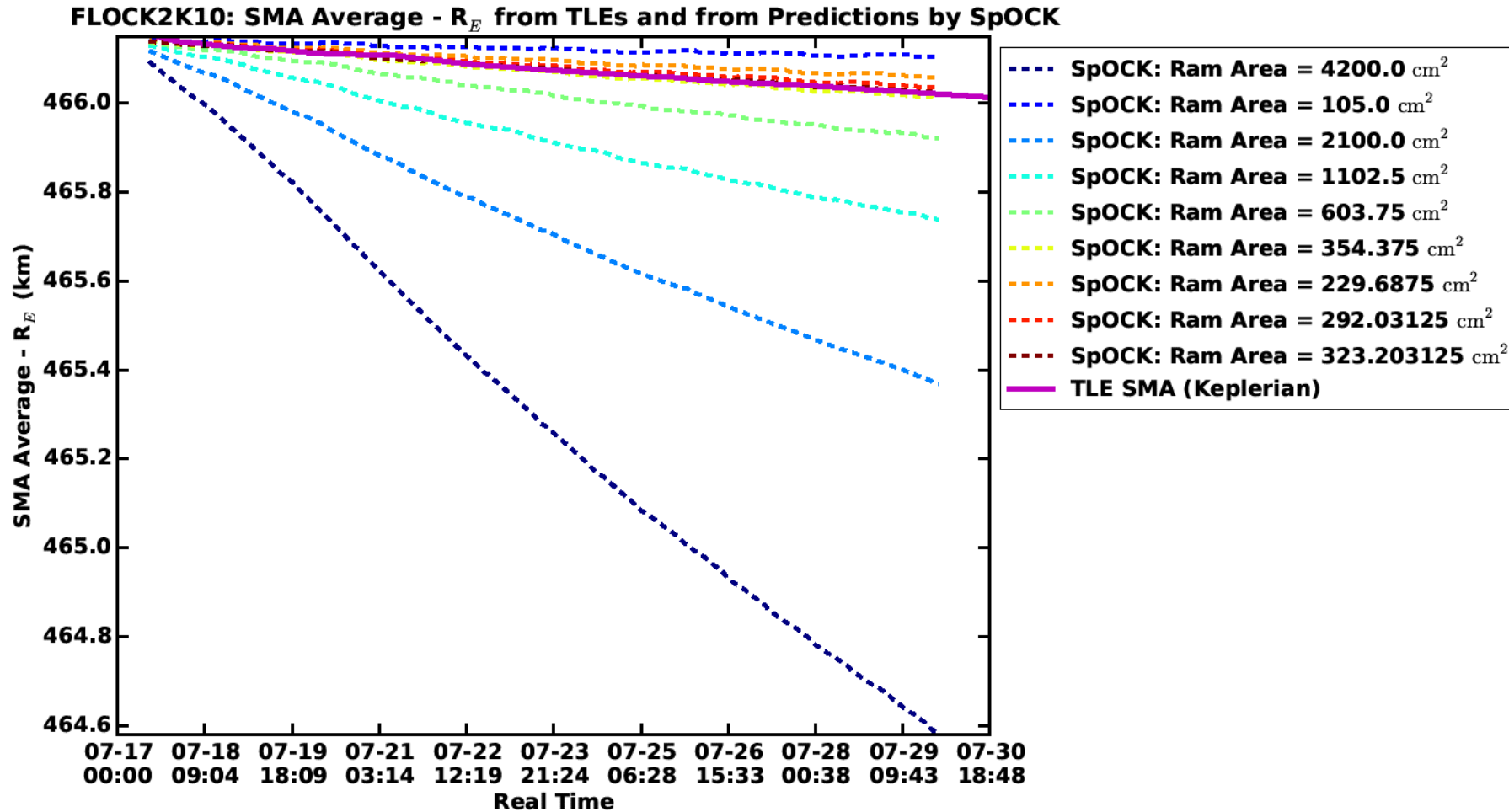
SpOCK draws density predictions from MSISE, yet when trying to reproduce spacecraft orbits during enhanced geomagnetic activity, the altitudes are too high → MSISE is underpredicting the density

# Methodological Approach to Density Estimation Calibration

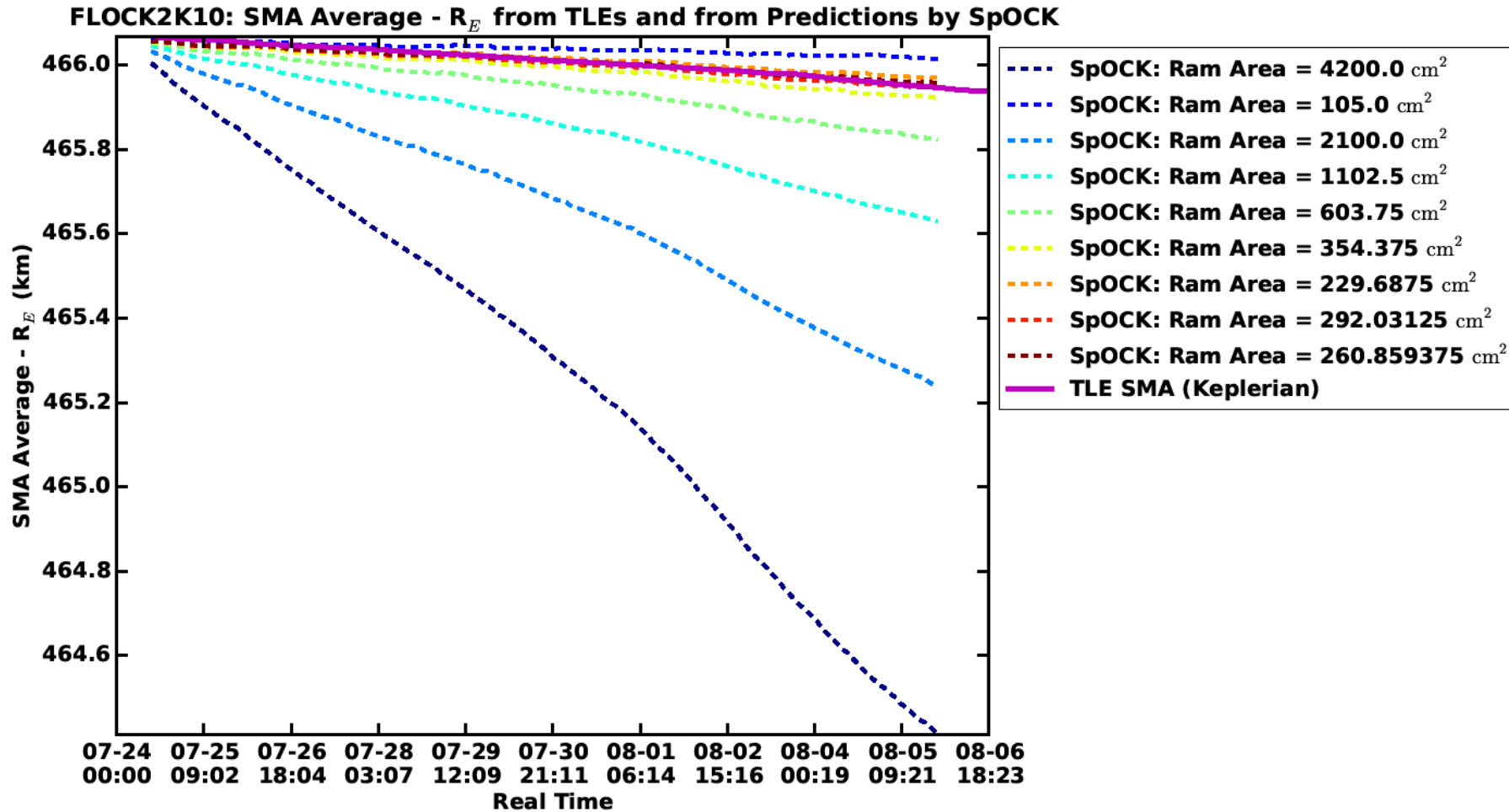
- Characterization of satellite geometry through bracketed optimization algorithm employing SpOCK (geomagnetic quiet time).
- Determination of seasonal optimized geometry dependency (in progress).
- Adjustment of 3-hour  $A_p/F_{10.7}$ /neutral density during active geomagnetic times, employing SpOCK with optimized geometry.



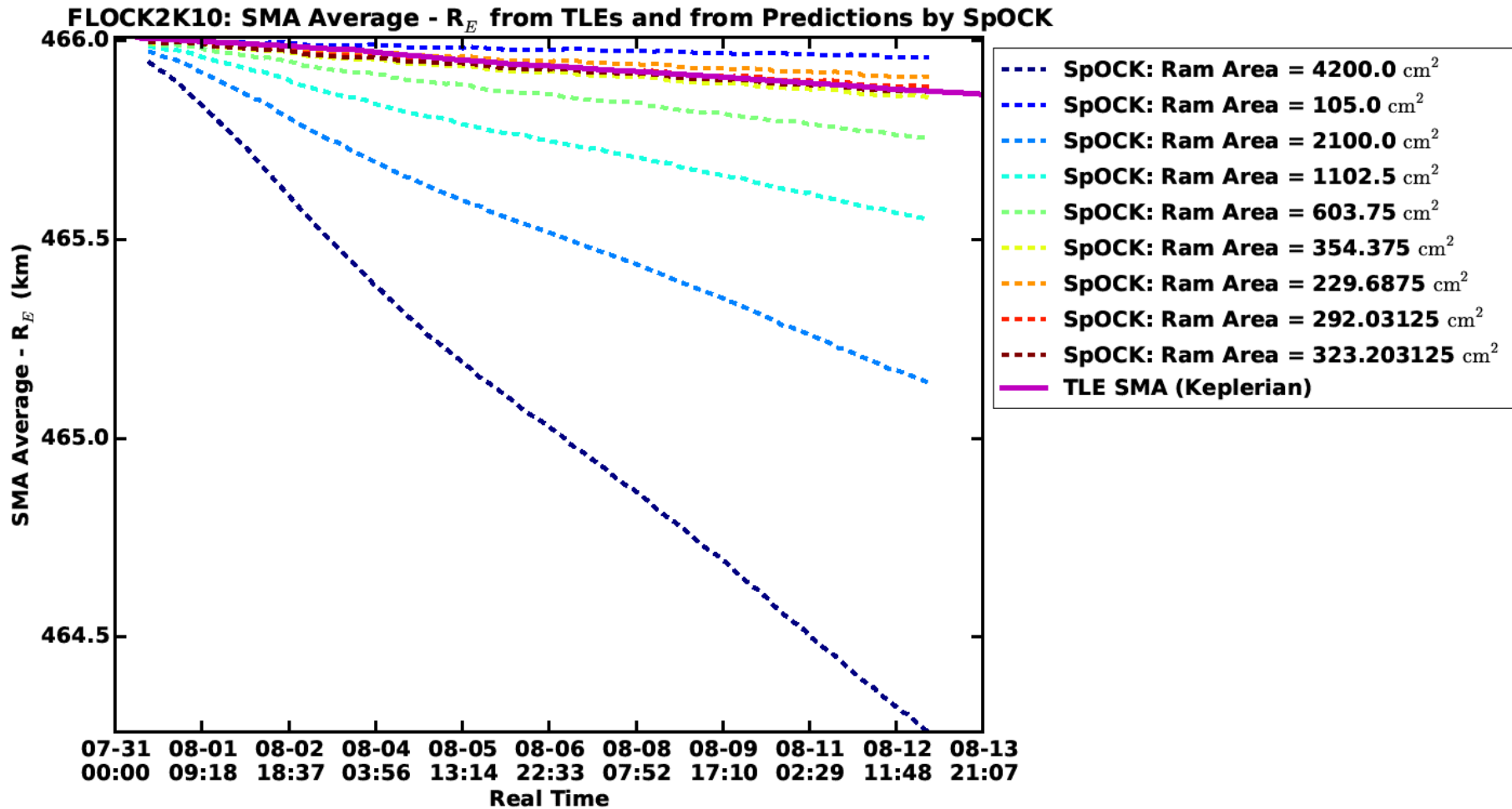
# Area Optimization



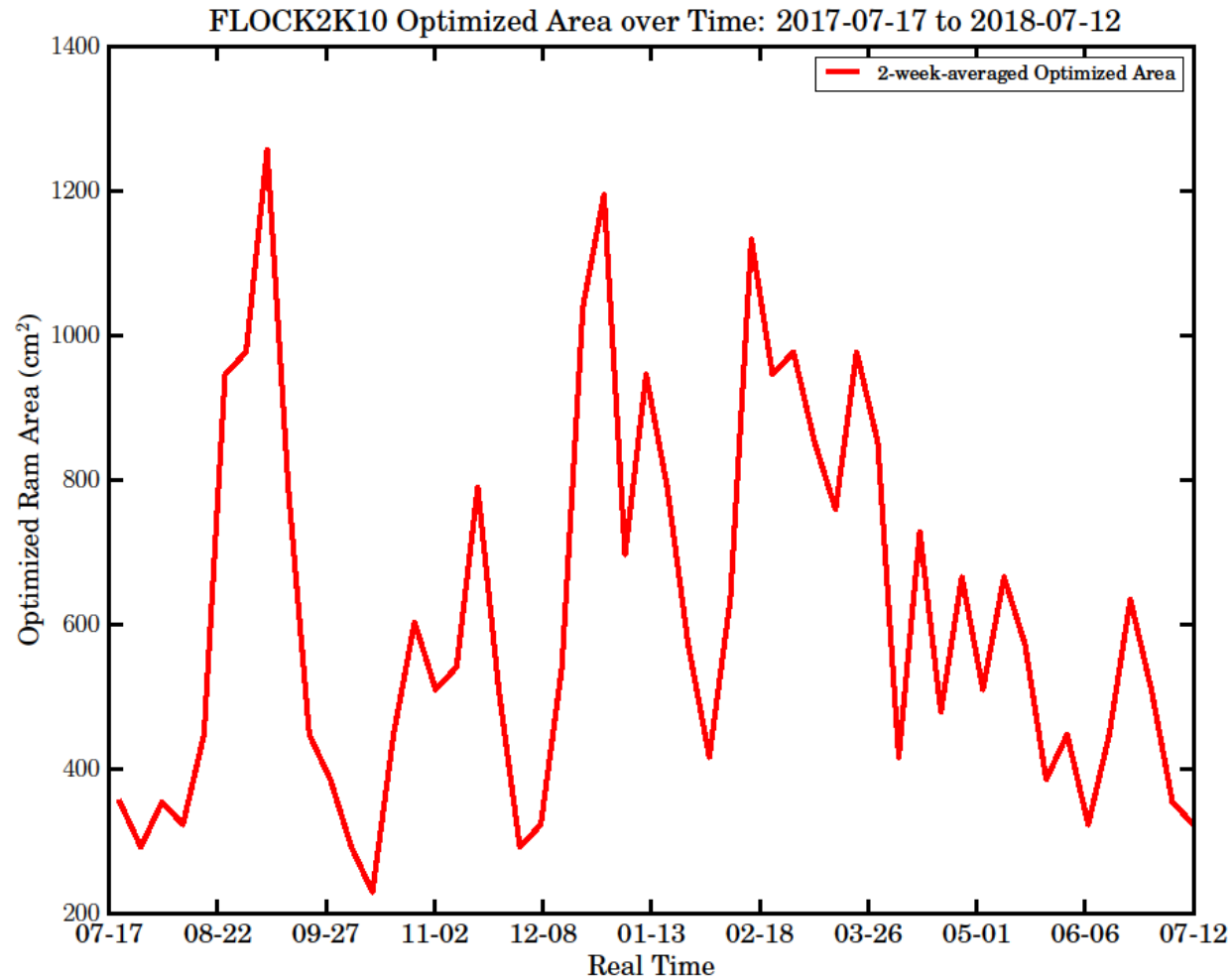
# Area Optimization (cont.)



# Area Optimization (cont.)

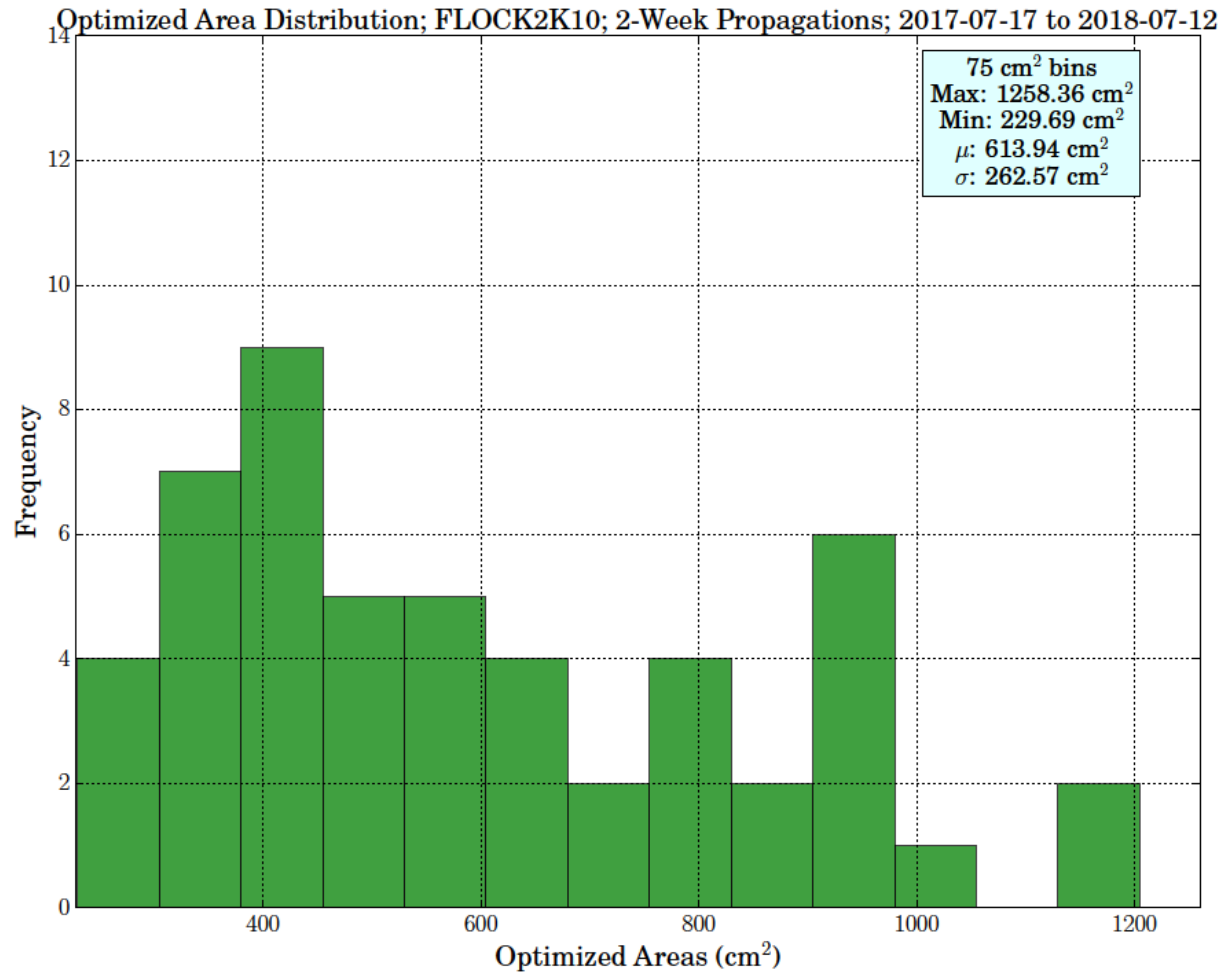


# Area Optimization (cont.)

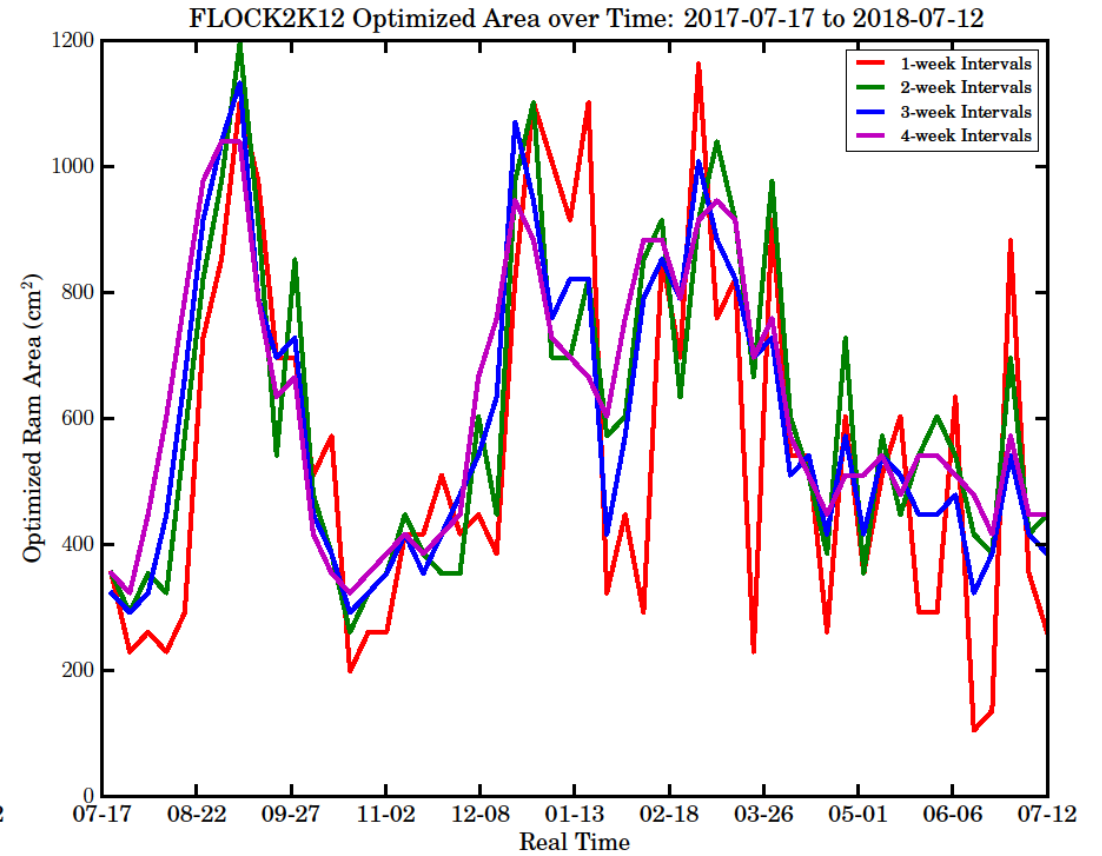
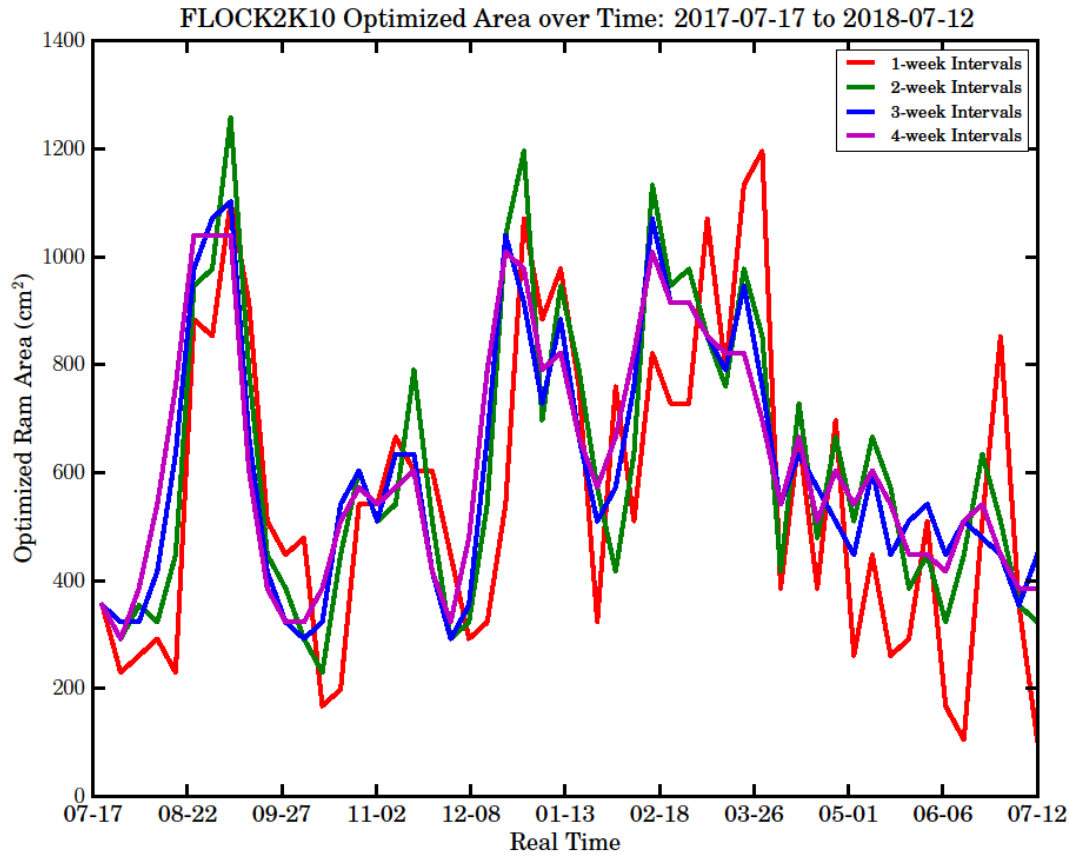




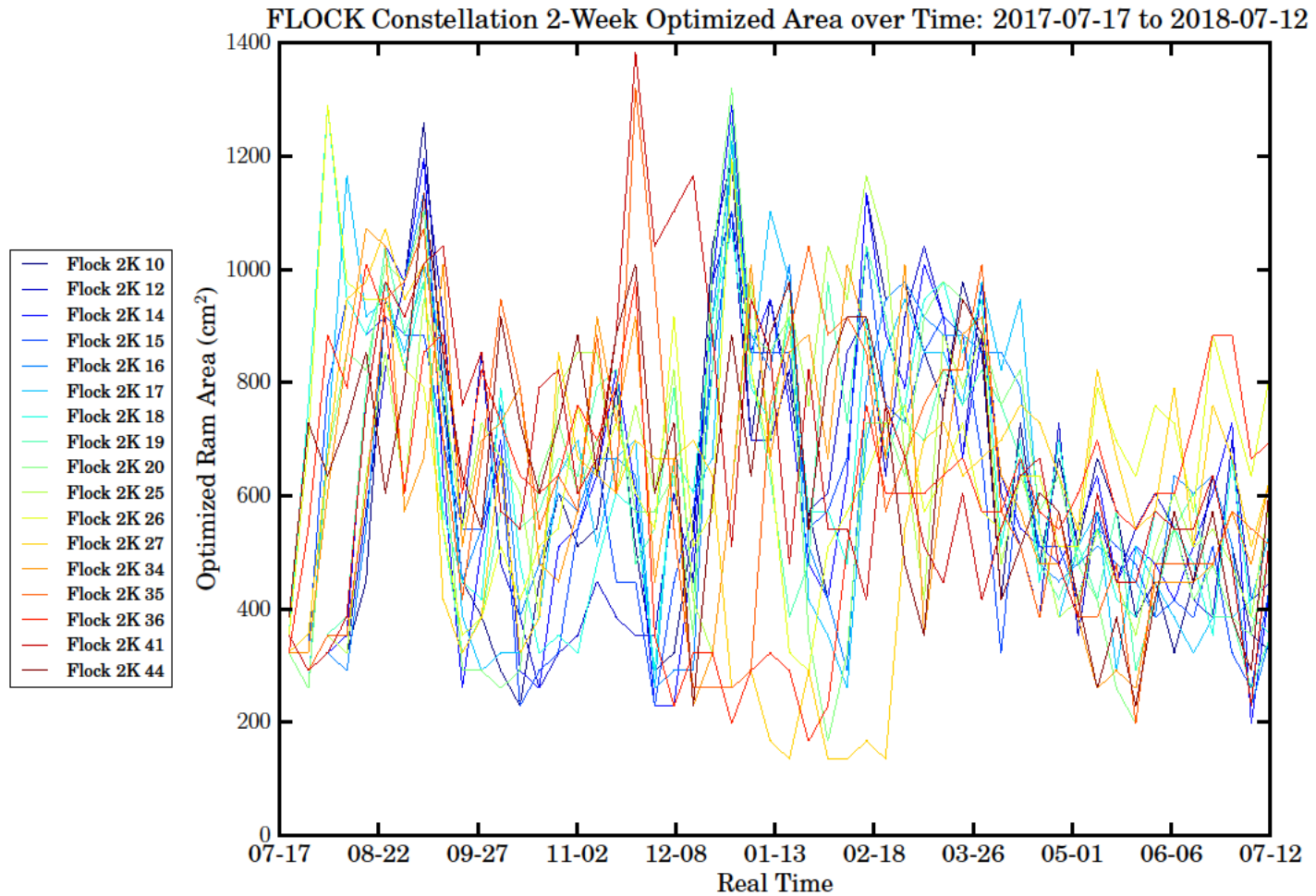
# Area Optimization (cont.)



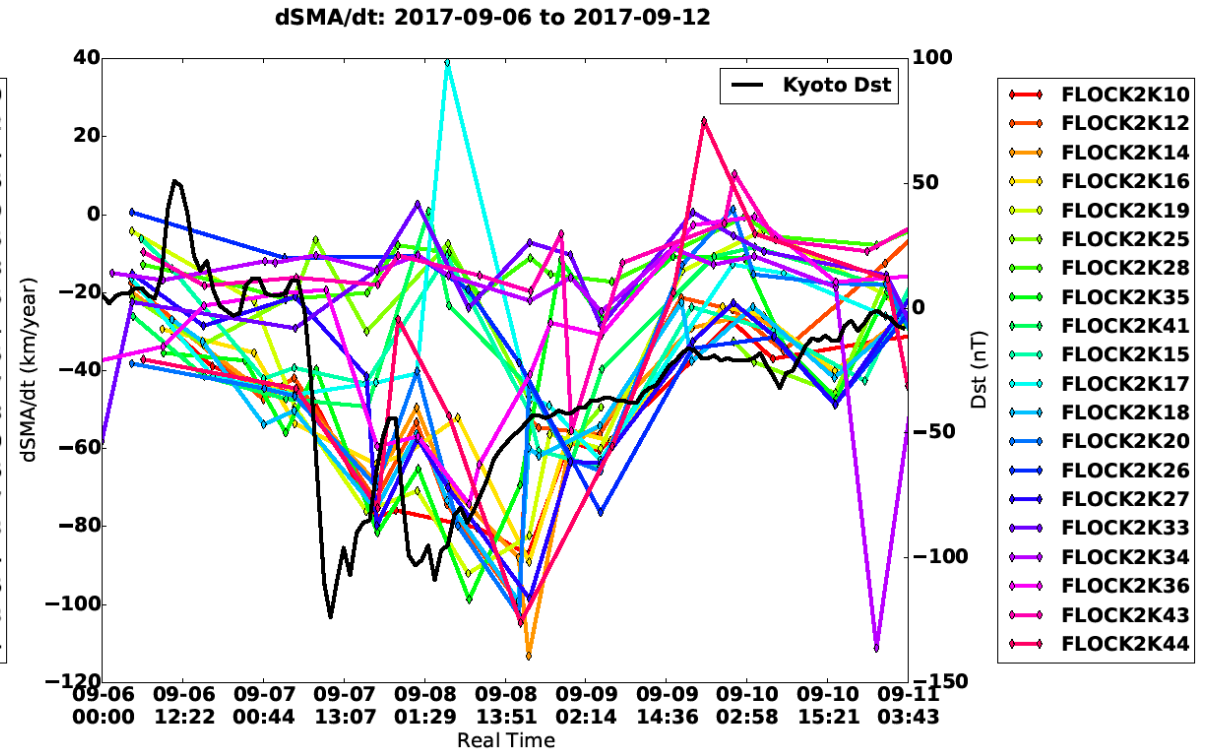
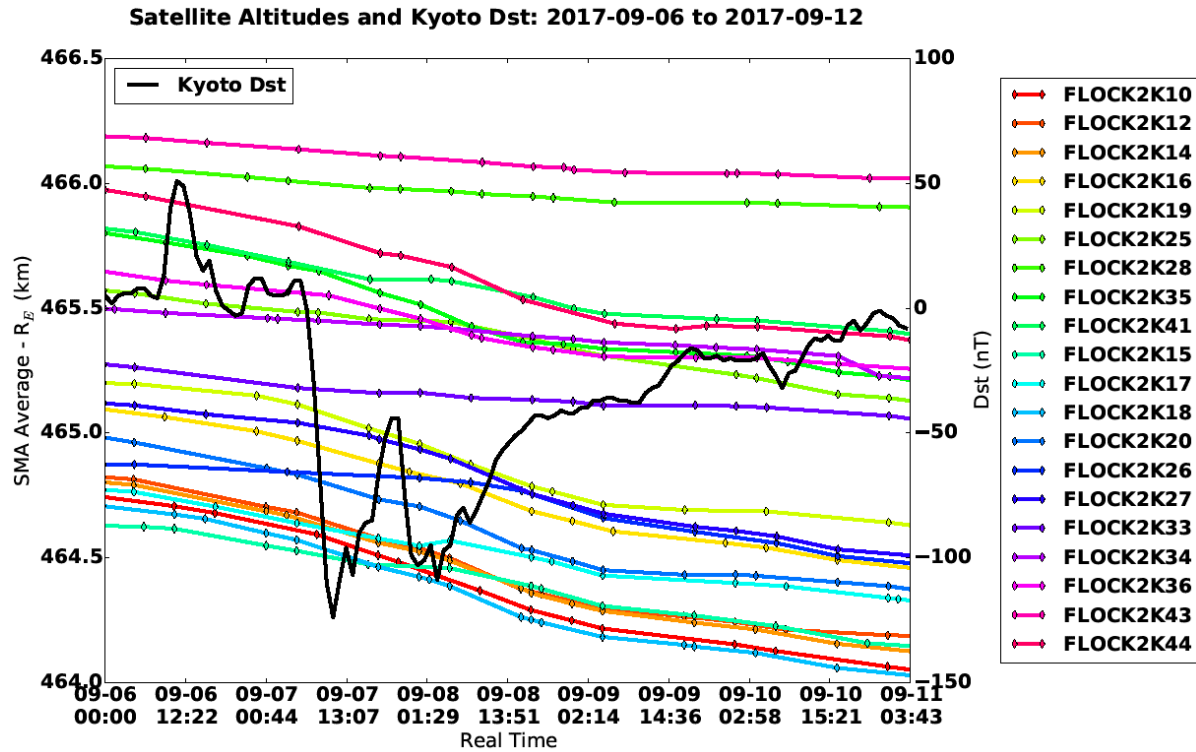
# Area Optimization (cont.)



# Area Optimization (cont.)



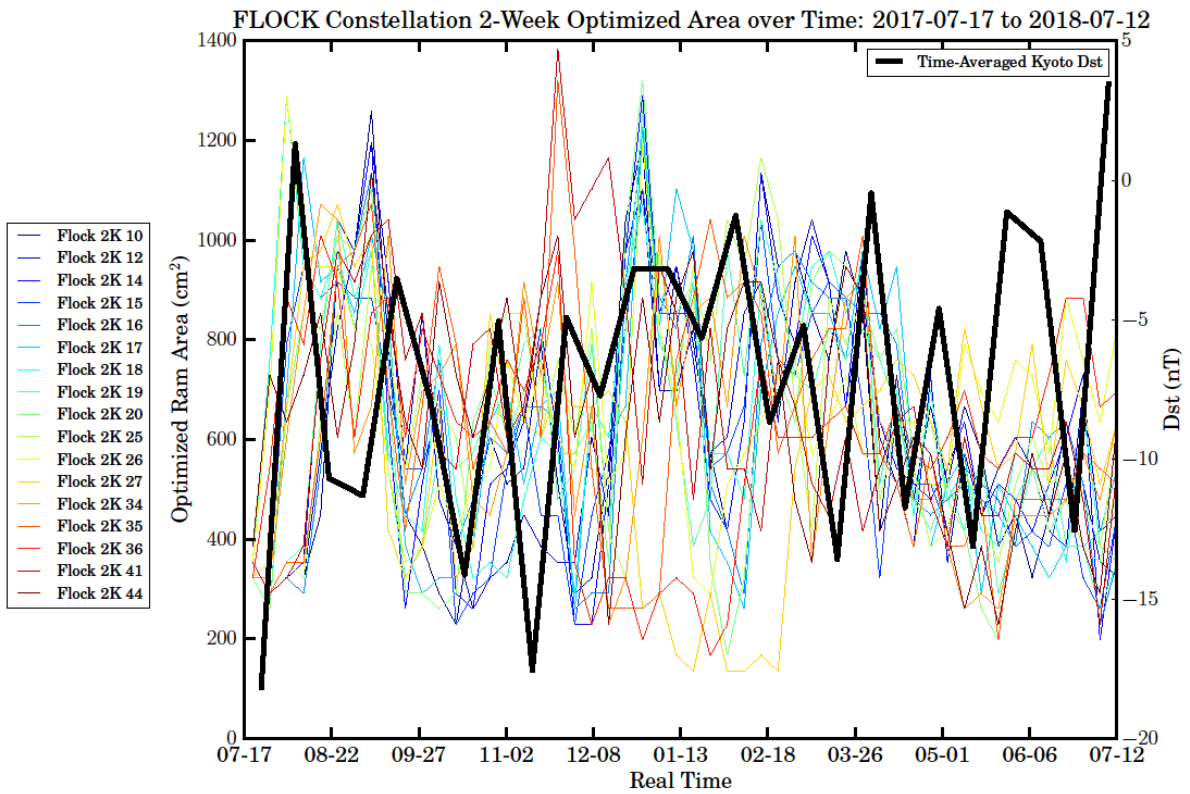
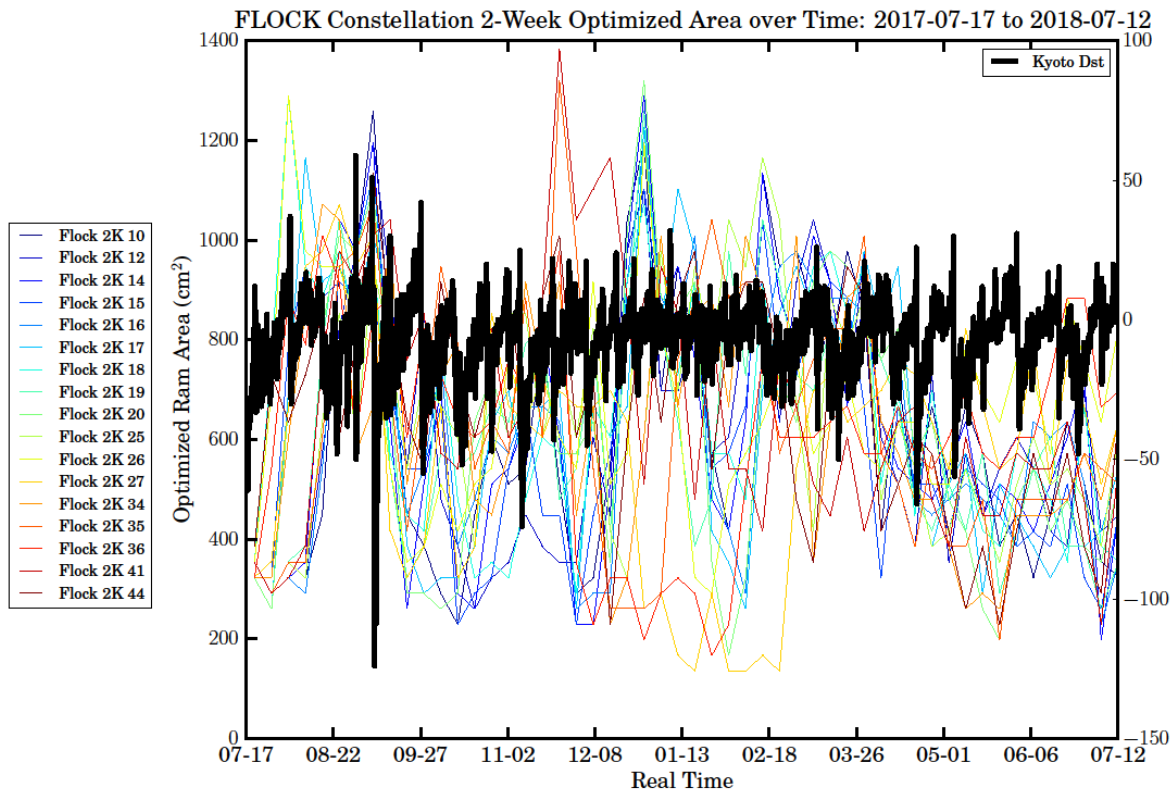
# Area Optimization (cont.)



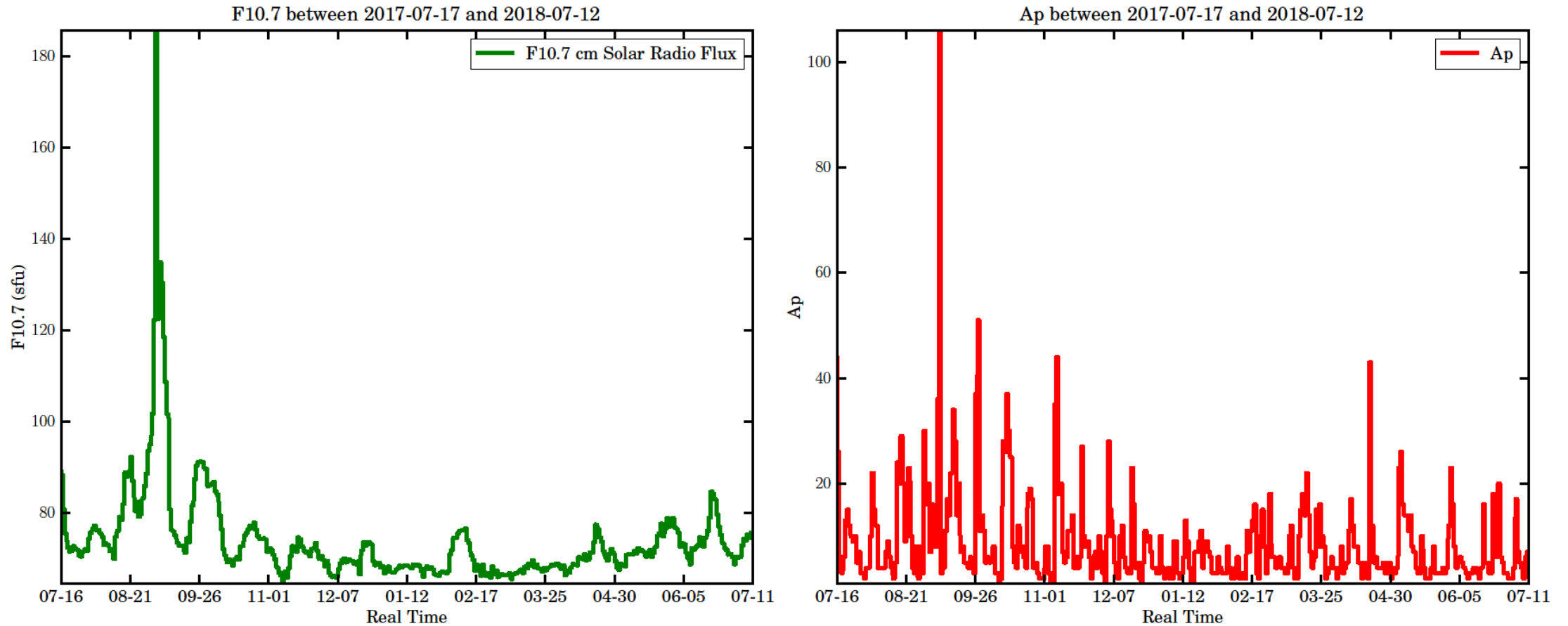
Satellites Flock 2K 28 and Flock 2K 43 were removed from our analysis due to their altitude profiles demonstrating little to discernable Dst-related trend in comparison to the rest of the 2K constellation.



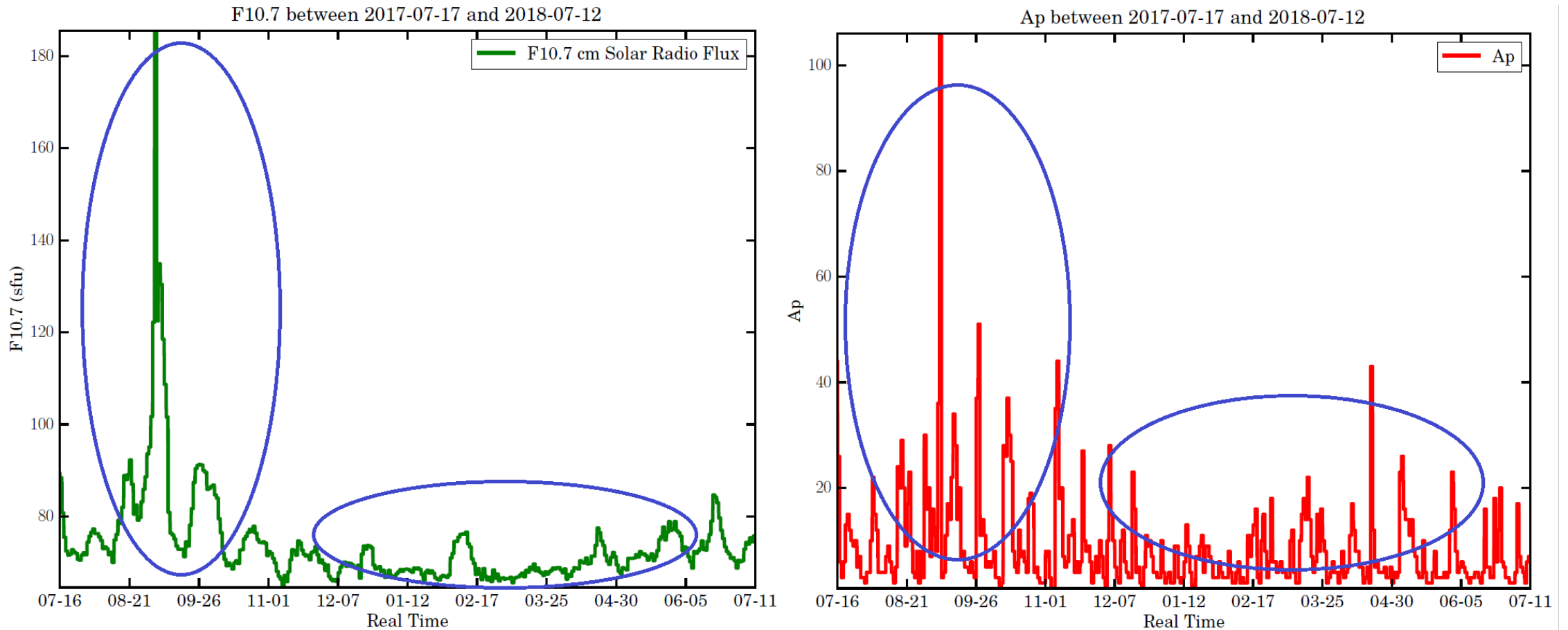
# Evaluating Nuances of NLRMSISE-00 Performance



# Evaluating Nuances of NLRMSISE-00 Performance (cont.)

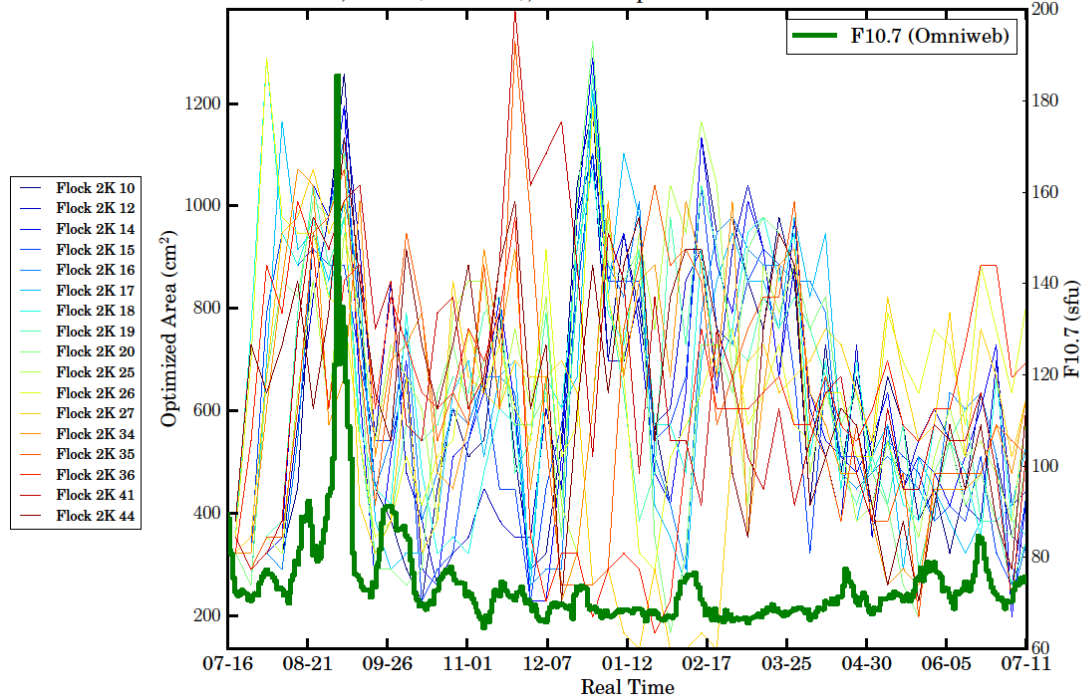


# Evaluating Nuances of NLRMSISE-00 Performance (cont.)

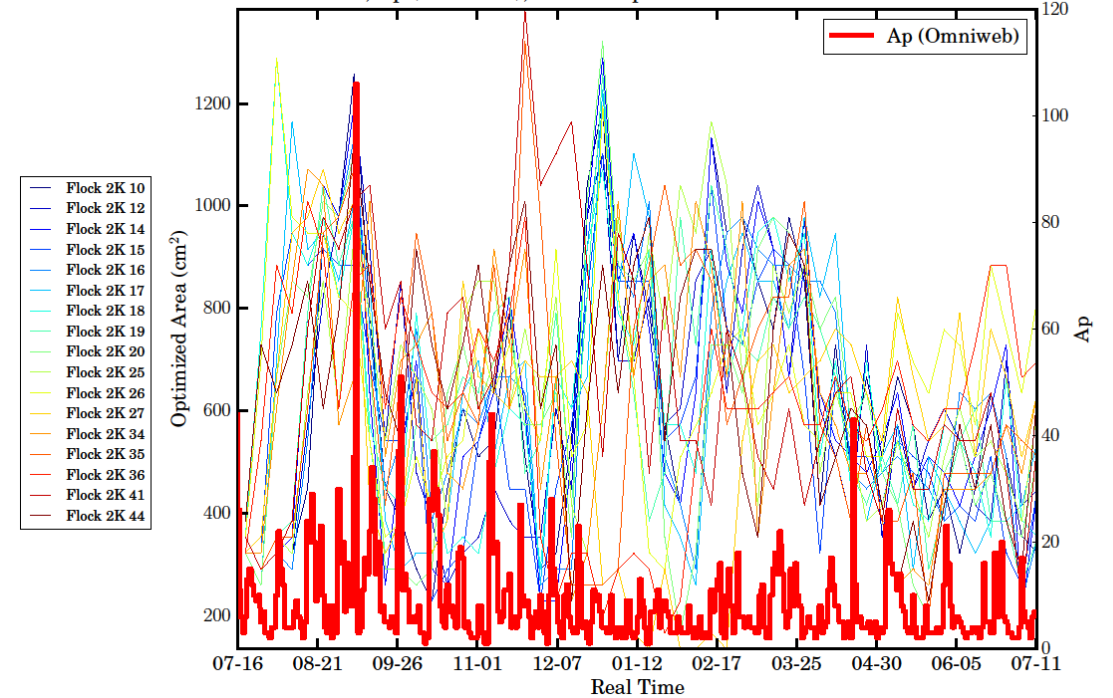


# Evaluating Nuances of NLRMSISE-00 Performance (cont.)

FLOCK Constellation; F10.7 (Omniweb); 2-Week Optimized Area over Time: 2017-07-17 to 2018-07-12



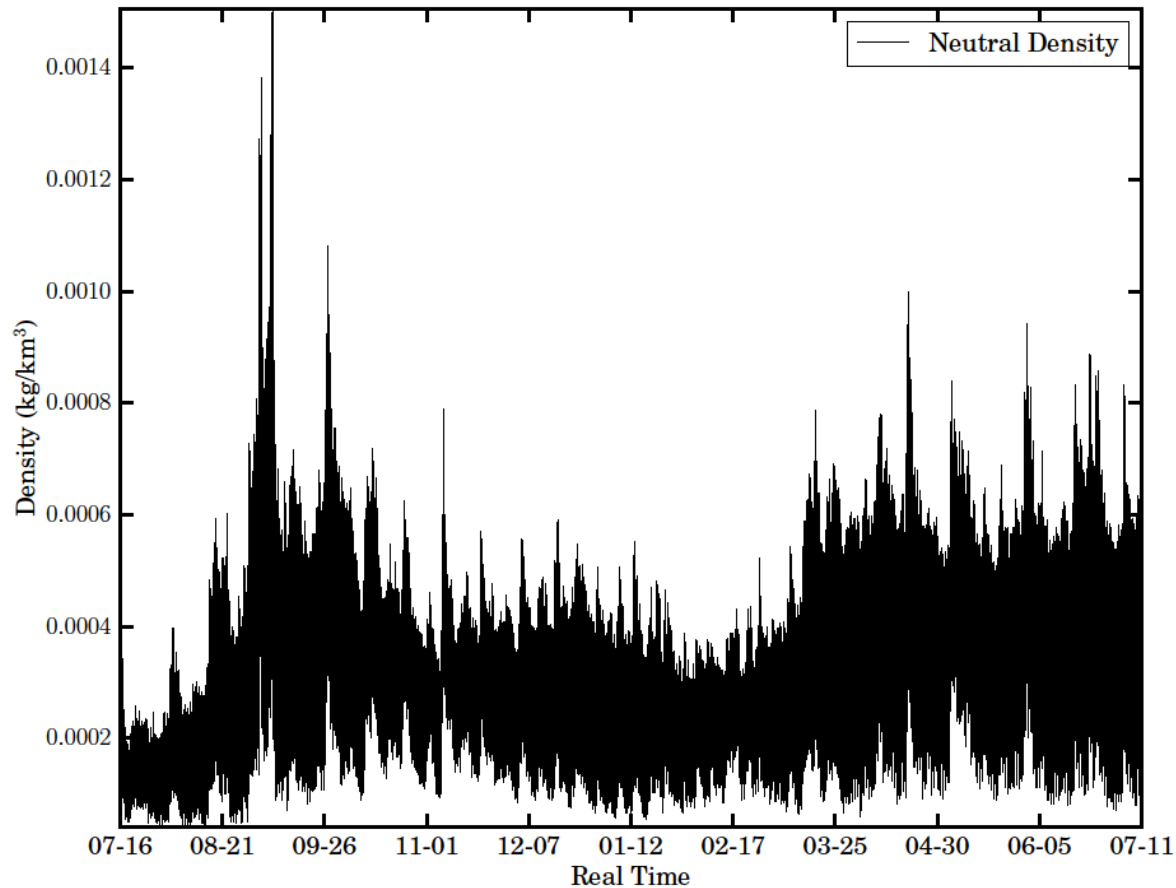
FLOCK Constellation; Ap (Omniweb); 2-Week Optimized Area over Time: 2017-07-17 to 2018-07-12



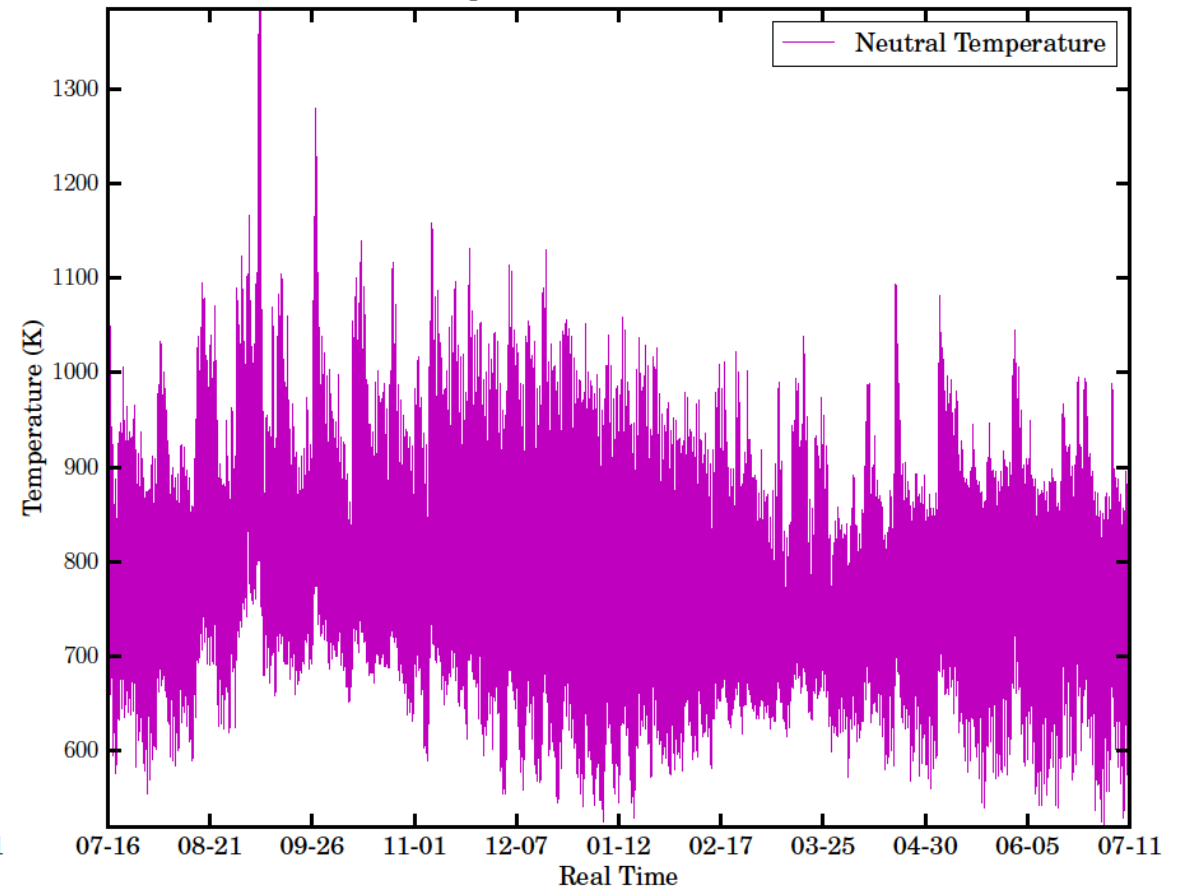


# Evaluating Nuances of NRLMSISE-00 Performance (cont.)

NRLMSISE-00 Density between 2017-07-17 and 2018-07-12

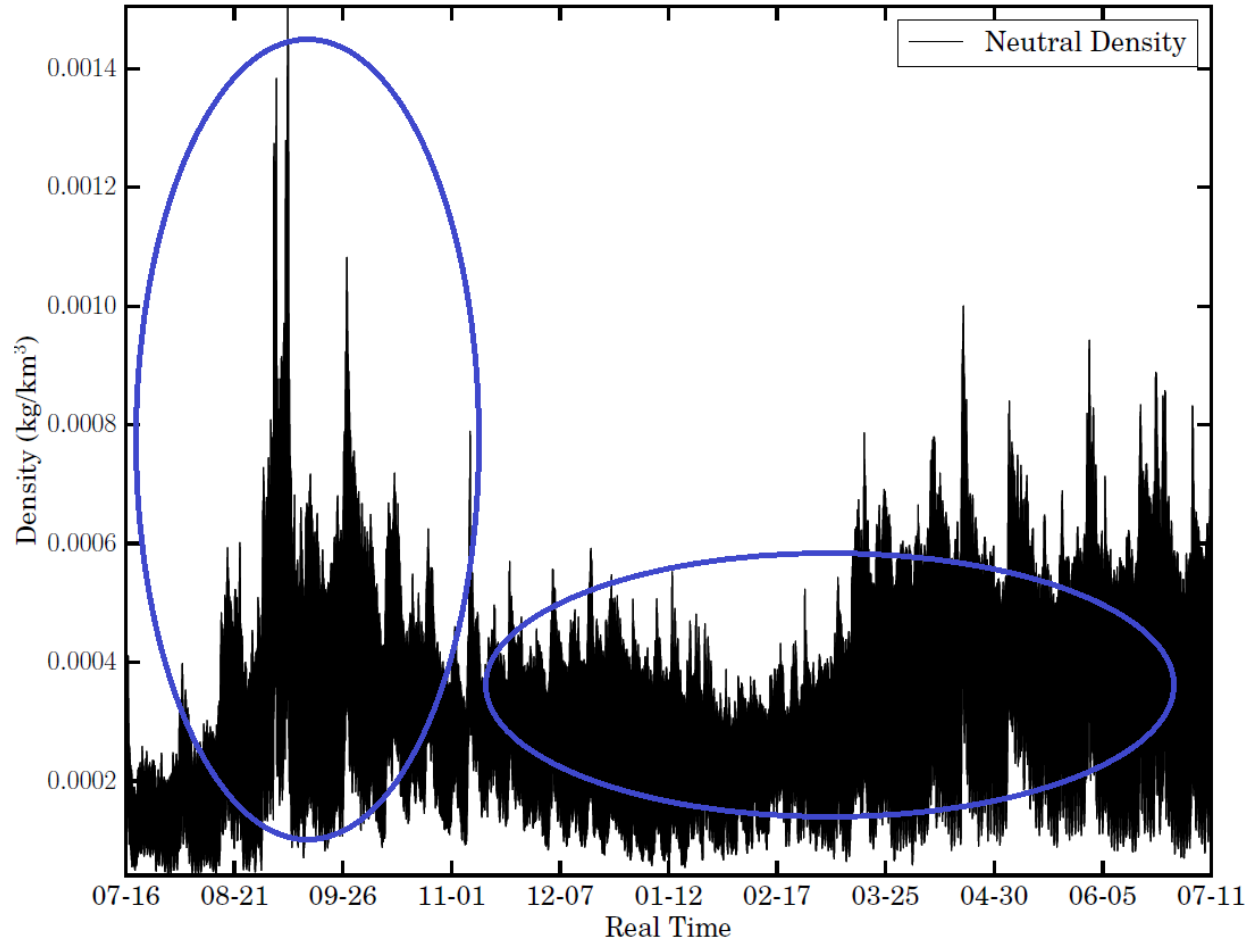


NRLMSISE-00 Temperature between 2017-07-17 and 2018-07-12

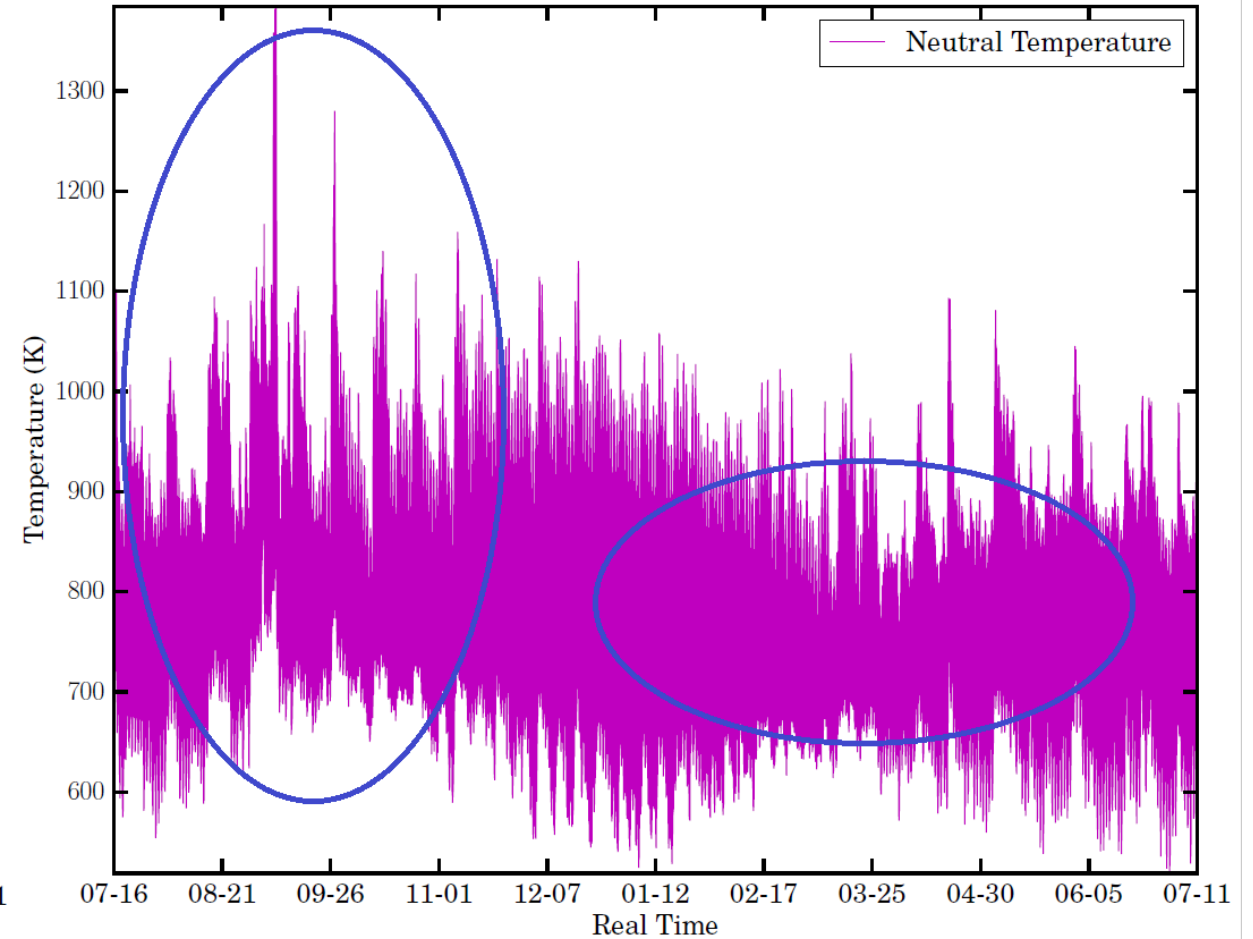


# Evaluating Nuances of NRLMSISE-00 Performance (cont.)

NRLMSISE-00 Density between 2017-07-17 and 2018-07-12

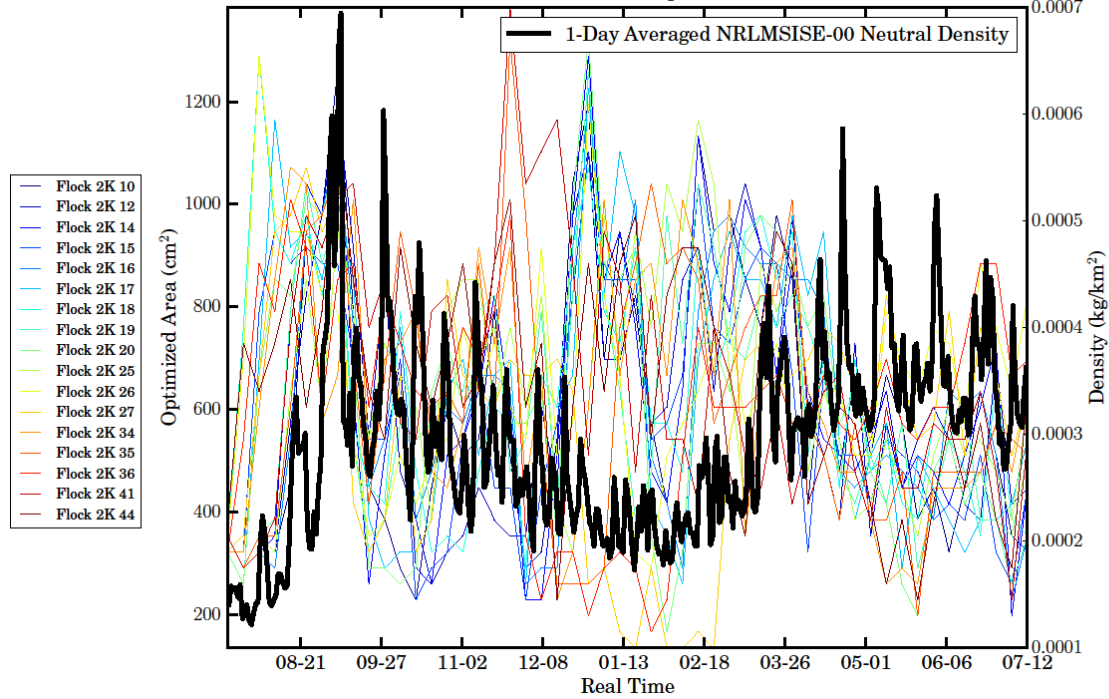


NRLMSISE-00 Temperature between 2017-07-17 and 2018-07-12

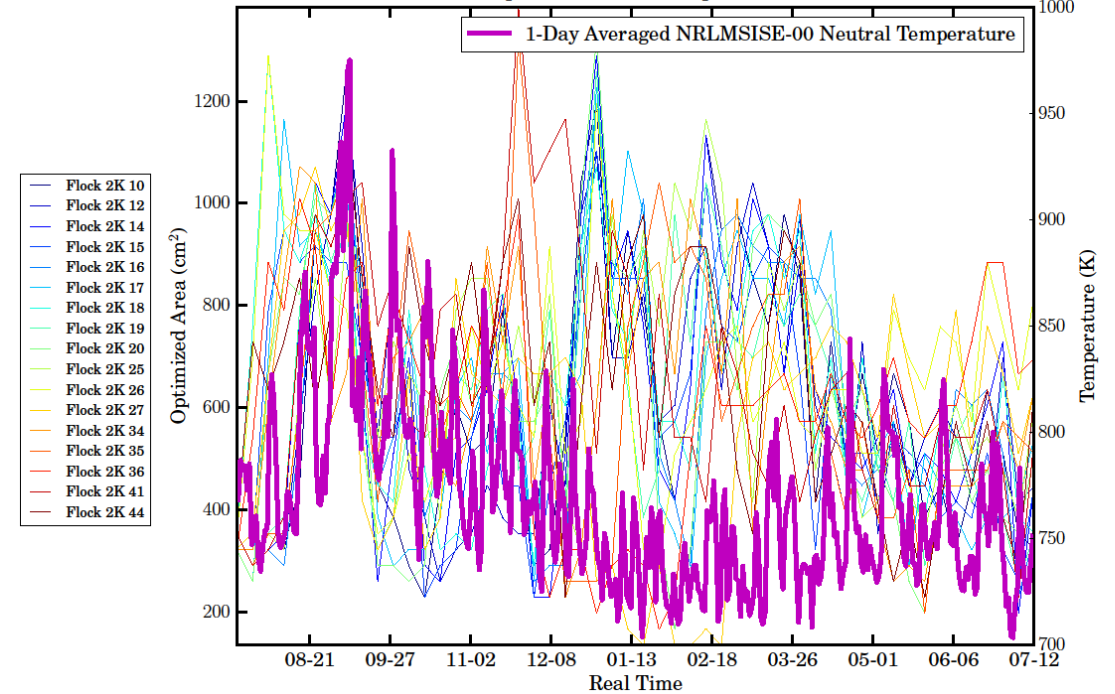


# Evaluating Nuances of NRLMSISE-00 Performance (cont.)

FLOCK Constellation; NRLMSISE-00 Density; 2-Week Optimized Area over Time: 2017-07-17 to 2018-07-12



FLOCK Constellation; NRLMSISE-00 Temperature; 2-Week Optimized Area over Time: 2017-07-17 to 2018-07-12



# Conclusion and Future Goals

- MSISE's performance during geomagnetic storms is questionable as noted by high average optimized areas during these times, indicating a bias towards density underestimation; but this is not always the case.
- We must begin multiplicative factor density analysis to isolate the effect of scale factors to the density on minimizing SpOCK orbit RMS error as well as probing the modification of  $A_p$  and  $F_{10.7}$ .
- These methods must be stress-tested against constellations of non-uniform geometry/configuration satellites at varying altitudes.

# References

1. Burns, et al., "Geomagnetic storm effects in the low- to middle-latitude upper thermosphere", *Journal of Geophysical Research*, 100, A8, 14673-14691, 1995.
2. Bruinsma, S. L., et al., "Validation of GOCE densities and evaluation of thermosphere models", *Advances in Space Research*, 54, 4, 576-585, 2014.
3. Bowman, B. R. and Storz M., "High accuracy satellite drag model (HASDM)", in: de Lafontaine, J., Treder, A. J., Soyka, M. T., and Sims, J. A. (Eds.), *Astrodynamics 2003, Advances in the Astronautical Sciences*, vol. 116, Unvelt, Inc. San Diego, AAS 03-625, 2003.
4. Bowman, B. R., and Tobiska, W. K., "Thermospheric Density Analyses Project HASDM", *GEM-CEDAR Workshop*, 2014.
5. Doornbos, Eelco, Klinkrad, Heiner, Visser, Pieter. (2008), "Use of two-line element data for thermosphere neutral density model calibration", *Advances in Space Research*, 41, 7, 1115-1122.
6. Fedrizzi, Mariangel, Fuller-Rowell, Timothy J., and Codrescu, Mihail (2015), "Neutral Density Variability Driven by Geomagnetic Forcing: Global Joule Heating Index", [[https://ccmc.gsfc.nasa.gov/RoR\\_WWW/workshops/CEDAR\\_2015\\_Workshop/Fedrizzi\\_Joule\\_heating\\_index\\_final.pdf](https://ccmc.gsfc.nasa.gov/RoR_WWW/workshops/CEDAR_2015_Workshop/Fedrizzi_Joule_heating_index_final.pdf)]
7. Forbes, et al., "Thermosphere density variations due to the 15-24 April 2002 solar events from CHAMP/STAR accelerometer measurements", *Journal of Geophysical Research*, 110, A12S27, 2005.
8. Liu, H. and Lühr, H., "Strong disturbance of the upper thermospheric density due to magnetic storms: CHAMP observations", *Journal of Geophysical Research*, 110, A09S29, 2005.
9. Mayr, et al., "Global excitation of wave phenomena in a dissipative multiconstituent medium, 2, Impulsive perturbations in the Earth's thermosphere", *Journal of Geophysical Research*, 89, 10961-10986, 1984.
10. Picone, J. M., Hedin, A. E., Drob, D. P., and Aikin, A. C., "NRLMSISE-00 empirical model of the atmosphere: Statistical comparisons and scientific issues", *Journal of Geophysical Research: Space Physics*, 107, A12, 2002.
11. Prölss, G. W., "Magnetic storm associated perturbations of the upper atmosphere: Recent results obtained by satellite-borne gas analyzers", *Reviews of Geophysics*, 18, 1, 1980.
12. Prölss, G. W., et al., "On explaining the local time variation of ionospheric storm effects", *Annals of Geophysics*, 11, 1-9, 1993.
13. Rawat, R., Alex, S., and Lakhina, G. S., "Storm-time characteristics of intense geomagnetic storms ( $Dst \leq -200$  nT) at low-latitudes and associated energetics", *Journal of Atmospheric and Solar-Terrestrial Physics*, 72, 18, 1364-1371, 2010.
14. Storz, M. F., et al., "High Accuracy satellite drag model (HASDM)", *Advances in Space Research*, 36, 12, 2497-2505, 2005.
15. Sutton, E.K., Forbes, J. M., and Knipp, D. J., "Rapid response of the thermosphere to variations in Joule heating", *J. Geophys. Res.*, 114, 4319, doi:10.1029/2008JA013667, 2009.
16. Sutton, E. K., et al., "Density and Winds in the Thermosphere Deduced from Accelerometer Data", *Journal of Spacecraft and Rockets*, 44, 6, November-December 2007.
17. Tausch, D. R., Carignan, G. R., Reber, C. A., "Neutral composition variation above 400 kilometers during a magnetic storm", *Journal of Geophysical Research*, 76, 34, 1971.
18. Vichare, G. and Lakhina, G. S., "Some characteristics of intense geomagnetic storms and their energy budget", *Journal of Geophysical Research: Space Physics*, 110, A3, 2005.
19. Visser, P., Doornbos, E., van den Ijssel, J. et al., "Thermospheric density and wind retrieval from Swarm observations", *Earth Planet Sp*, 65, 12, 2013.